

Polymer Products LLC

Lighting Fixtures

Assemblies and Components

Lighting Fixtures Assemblies and Components

**The finest quality, delivered
on time and on budget.**

Polymer Products offers a host of solutions for your light fixturing needs:

- Small Wall Brackets
- Ceiling Canopies
- Wall Lanterns
- Post Top Fitters
- Piermounts
- Flushmounts

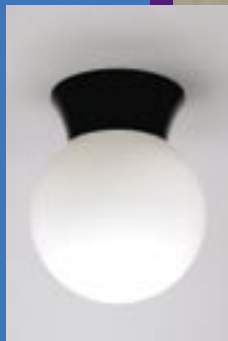
All Polymer Products fixtures are one-piece injection molded UV stabilized polycarbonate, and are available in black or white. They are UL and cUL listed for damp and wet locations. There are a variety of wiring options and accessories available.

Used in concert with Polymer Products' globes, cylinders, shapes and spheres, our fixtures provide easy and safe solutions for relamping in both commercial and residential applications.

Drawings for all catalog items are available upon request. For more detailed specifications, please contact Polymer Products at 1-800-258-POLY.

Count on Polymer Products for:

- Innovative technology and superior product performance
- Cost competitive products and exceptional value
- ISO compliance
- Comprehensive selection of materials and features
- Lightweight construction and durability
- UV stable and weather-resistant products
- Unparalleled customer service



GLOBES

Globes compatible with small wall brackets and ceiling canopies are available in the shapes and colors shown here. See the *Small Globes and Cylinders* brochure for details.



smooth globe



flat top cylinder



round top cylinder



flat top cylinder



jelly jar



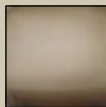
rugby



white



clear



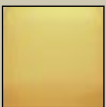
bronze



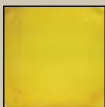
red



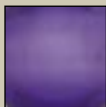
blue



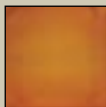
amber



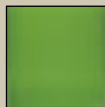
yellow



purple



orange



green

HARDWARE KITS



1204-10300
Ceiling Canopy
with Incandescent
Socket



0700-00062
Photocell
(shown in small wall bracket)



1100-26060
Small Wall Bracket
& Wall Lantern
Hardware Kit



1100-26061
Ceiling Canopy
Hardware Kit



0045-04000
Barrier Plate

CEILING CANOPIES

For indoor and outdoor use, polycarbonate ceiling canopies mount on ceilings as well as walls for security and functional lighting needs, and are also compatible with all Small Globes and Cylinders.



3104-10300



3101-10300

Item No.	Material	Color	Description	Case Pack	Availability
Ceiling Canopy—Shell only					
3104-10300	Polycarbonate	BLACK	Shell Only	250	Stock
3101-10300	Polycarbonate	WHITE	Shell Only	250	Stock
Ceiling Canopy—Assemblies Please call for special packaging requirements					
1204-10300	60 Watt Max	BLACK	60 Watt Incandescent	50	Stock
1201-10300	60 Watt Max	WHITE	60 Watt Incandescent	50	Stock
1204-10307	7 Watt Max	BLACK	Fluorescent—PI-7	50	Call
1201-10307	7 Watt Max	WHITE	Fluorescent—PI-7	50	Call
1204-10313	13 Watt Max	BLACK	Fluorescent—PI-13	50	Call
1201-10313	13 Watt Max	WHITE	Fluorescent—PI-13	50	Call
1100-26061	N/A	N/A	Hardware Kit	Call	Stock

SMALL WALL BRACKETS—used with threaded globes and cylinders

These polycarbonate wall brackets are for mounting on walls in indoor/outdoor areas such as entrances, walkways, gardens, pool areas, porches, decks, closets and storage areas. They are compatible with all our Small Globes and Cylinders.



3104-04000



3101-04000

Item No.	Material	Color	Description	Case Pack	Availability
Small Wall Bracket—Shell only					
3104-04000	Polycarbonate	BLACK	Shell Only	100	Stock
3101-04000	Polycarbonate	WHITE	Shell Only	100	Stock
Small Wall Bracket—Assemblies Please call for special packaging requirements					
1504-04000	60 Watt Max	BLACK	Incandescent	50	Stock
1501-04000	60 Watt Max	WHITE	Incandescent	50	Stock
1504-04002	60 Watt Max	BLACK	Incandescent with photocell	50	Call
1501-04002	60 Watt Max	WHITE	Incandescent with photocell	50	Call
1504-04007	7 Watt Max	BLACK	Fluorescent—PI-7	50	Call
1501-04007	7 Watt Max	WHITE	Fluorescent—PI-7	50	Call
1504-14007	7 Watt Max	BLACK	Fluorescent—PI-7 with photocell	50	Call
1501-14007	7 Watt Max	WHITE	Fluorescent—PI-7 with photocell	50	Call
1504-04013	13 Watt Max	BLACK	Fluorescent—PI-13	50	Call
1501-04013	13 Watt Max	WHITE	Fluorescent—PI-13	50	Call
1504-14013	13 Watt Max	BLACK	Fluorescent—PI-13 with photocell	50	Call
1501-14013	13 Watt Max	WHITE	Fluorescent—PI-13 with photocell	50	Call
1504-04022	22 Watt Max	BLACK	Fluorescent—Quad-22	50	Call
1501-04022	22 Watt Max	WHITE	Fluorescent—Quad-22	50	Call
1504-14022	22 Watt Max	BLACK	Fluorescent—Quad-22 with photocell	50	Call
1501-14022	22 Watt Max	WHITE	Fluorescent—Quad-22 with photocell	50	Call
1100-26060	N/A	N/A	Hardware Kit	Call	Stock
0045-04000	N/A	N/A	Barrier Plate	Call	Stock
0700-00062	N/A	N/A	Photocell	125	Stock

FLUSHMOUNTS

These injection molded UV stabilized polycarbonate fixtures are available in either rectangular or round format. Each flushmount includes a compatible diffuser, and the round flushmounts offer a choice of either a mushroom or flat top diffuser. They are appropriate for use indoors or outdoors.



3014-10120



3104-10100

Item No.	Material	Color	Description	Case Pack	Availability
Round Flushmount—Component Parts-Base and Diffuser					
3104-10120	Polycarbonate	BLACK	15" Round Base-Only	60	Stock
3101-10120	Polycarbonate	WHITE	15" Round Base-Only	60	Stock
3101-10130	Polycarbonate	WHITE	Round Flat Diffuser	60	Stock
3101-10140	Polycarbonate	WHITE	Mushroom Diffuser	60	Stock
3101-96425	Polycarbonate	WHITE	Mounting Plate for PL Lamp	60	Stock
Rectangle Flushmount—Component Parts-Base and Diffuser					
3104-10100	Polycarbonate	BLACK	4" x 11" Rectangle Base Only	60	Call
3101-10100	Polycarbonate	WHITE	4" x 11" Rectangle Base Only	60	Call
3101-10110	Polycarbonate	WHITE	Rectangle Diffuser	60	Call
1404-00001	N/A	N/A	O Ring for Flushmounts 7.5	N/A	Call
1100-26062	N/A	N/A	Flushmount Hardware Kit	N/A	Stock



3101-10130
Round Flat Diffuser
(shown on round base)



3101-10140
Mushroom Diffuser
(shown on round base)



3101-10110
Rectangle Diffuser
(shown on rectangle base)

WALL LANTERN FIXTURES

Affixed to walls, this piece has both indoor and outdoor applications for security and functional lighting in hallways, gardens, porches, garages and other areas. Each unit includes its own acrylic diffuser with a twist lock fitter.



3104-10200



3101-10200

Item No.	Material	Color	Description	Case Pack	Availability
Wall Lantern—Shell only					
3104-10200	Polycarbonate	BLACK	Shell Only	100	Stock
3101-10200	Polycarbonate	WHITE	Shell Only	100	Stock
3201-10268	Acrylic	WHITE	Diffuser	100	Stock
1100-26060	N/A	N/A	3 Pieces Hardware Kit	N/A	Stock
Wall Lantern—Assemblies Please call for special packaging requirements					
2104-10000	60 Watt Max	BLACK	Incandescent	50	Stock
2101-10000	60 Watt Max	WHITE	Incandescent	50	Stock
2104-10007	7 Watt Max	BLACK	Fluorescent—PI-7	50	Call
2101-10007	7 Watt Max	WHITE	Fluorescent—PI-7	50	Call
2104-10013	13 Watt Max	BLACK	Fluorescent—PI-13	50	Call
2101-10013	13 Watt Max	WHITE	Fluorescent—PI-13	50	Call



3201-10268
Diffuser



3104-10200 with 3201-10268
(black shell shown
with diffuser)

POST TOP FITTERS

Post Top Fitters come in two models: Twist Lock and Solid Flange (Wing Clamp). The polycarbonate Twist Lock and Solid Flange models are for use with standard 3" posts indoors or outdoors. The Solid Flange model is designed for use with larger Spheres and Shapes. See the *Large Globes and Shapes* brochure for details.



3104-00100
3104-00200



3104-03400

Item No.	Material	Color	Description	Case Pack	Availability
Post Top Fitters—Twist lock mechanism. Use with 4" twist lock globes and shapes.					
3104-00100	Polycarbonate	BLACK	B-1 Fitter for 3" Pole Shell only	50	Stock
3101-00100	Polycarbonate	WHITE	B-1 Fitter for 3" Pole Shell only	50	Stock
1304-01300	60 Watt Max	BLACK	B-1 Fitter for 3" Pole Incandescent	50	Stock
1301-01300	60 Watt Max	WHITE	B-1 Fitter for 3" Pole Incandescent	50	Stock
1304-01313	13 Watt Max	BLACK	B-1 Fitter for 3" Pole Fluorescent—PI-13	50	Call
1301-01313	13 Watt Max	WHITE	B-1 Fitter for 3" Pole Fluorescent—PI-13	50	Call
Post Top Fitters—Twist lock mechanism. Use with 5.75" twist lock globes and shapes.					
3104-00200	Polycarbonate	BLACK	B-2 Fitter for 3" Pole Shell only	50	Stock
3101-00200	Polycarbonate	WHITE	B-2 Fitter for 3" Pole Shell only	50	Stock
1304-02300	60 Watt Max	BLACK	B-2 Fitter for 3" Pole Incandescent	50	Stock
1301-02300	60 Watt Max	WHITE	B-2 Fitter for 3" Pole Incandescent	50	Stock
1304-02313	13 Watt Max	BLACK	B-2 Fitter for 3" Pole Fluorescent—PI-13	50	Call
1301-02313	13 Watt Max	WHITE	B-2 Fitter for 3" Pole Fluorescent—PI-13	50	Call
Post Top Fitters—Solid flange mechanism. Use with 5.25" neckless globes and shapes.					
3104-03400	Polycarbonate	BLACK	B-4 Fitter for 3" Pole No Socket (wings & springs)	50	Stock
3101-03400	Polycarbonate	WHITE	B-4 Fitter for 3" Pole No Socket (wings & springs)	50	Call
1304-04300	60 Watt Max	BLACK	B-4 Fitter for 3" Pole Incandescent	50	Call
1301-04300	60 Watt Max	WHITE	B-4 Fitter for 3" Pole Incandescent	50	Call
1304-04313	13 Watt Max	BLACK	B-4 Fitter for 3" Pole Fluorescent—PI-13	50	Call
1301-04313	13 Watt Max	WHITE	B-4 Fitter for 3" Pole Fluorescent—PI-13	50	Call
1304-04323	13 Watt Max	BLACK	B-4 Fitter for 3" Pole Fluorescent—Double PI-13	20	Call
1301-04323	13 Watt Max	WHITE	B-4 Fitter for 3" Pole Fluorescent—Double PI-13	20	Call
1100-26065	N/A	N/A	Hardware Kit for B-4	N/A	Stock

PIERMOUNTS

Designed for use with all our 3" Post Top Fitters, polycarbonate Piermounts are available in 4.5" or 9" heights. They convert any flat surface, such as a railing or fence post top, into a mounting surface for a fitter.



3104-06102

Item No.	Material	Color	Description	O.D.	Case Pack	Availability
3104-06102	Polycarbonate	BLACK	4.5"	2.75"	50	Stock
3101-06102	Polycarbonate	WHITE	4.5"	2.75"	50	Stock
3104-06101	Polycarbonate	BLACK	9"	2.75"	50	Stock
3101-06101	Polycarbonate	WHITE	9"	2.75"	50	Stock

Polymer Products LLC Terms and Conditions

General

The sale of products and services is subject to the following terms and conditions, and to any additional terms and conditions (not in conflict with the following terms and conditions) to which Polymer Products, LLC expressly agrees in writing. Polymer Products, LLC specifically objects to, and rejects, any contrary terms and conditions contained in any purchase order for products and services. No acknowledgment of a purchase order waives the following terms and conditions, unless signed by an Executive Officer of Polymer Products, LLC. The provisions of this selection and the following terms and conditions shall constitute a part of any contract for the sale of products and services.

Delivery and Risk of Loss

All domestic deliveries are F.O.B. Rochester, NY, or from which products are shipped. All international deliveries are ex-works, Rochester, NY, U.S.A., or from which products are shipped. All risk of damage to, or loss or destruction of, products passes to customer upon such delivery. Delivery of products may be in a single delivery or in installments.

Pricing and Terms

All prices are in U.S. Dollars and are F.O.B., domestic deliveries, or ex-works, international deliveries, place of shipment, no freight allowed. Terms are CIA unless written credit terms, net 30 days, are established between Polymer Products, LLC and customer. Polymer Products, LLC will exercise reasonable efforts to provide customers with notice of revisions to its products pricing. Prices quoted on custom products are open for 30 days from the quotation date and are based on estimated quantities, cycle time, part weight, machine and material requirements, and other factors, and are subject to adjustment.

Return/Remedies

Products ordered in error may be returned, at customer's expense, within ninety (90) days of delivery for credit, less 20% restocking charge. Products which are nonconforming, or which are shipped in error by Polymer Products, LLC may be returned within thirty (30) days of delivery for full credit or replacement, at customer's options, normal freight allowed. Polymer Products, LLC shall have no liability for products damaged in shipment. No product shall be returned without prior written authorization and all returns require a return authorization number, which must be included on all shipping paperwork.

Wattage Warning

Polymer Products offers recommended maximum wattage for its polycarbonate and acrylic products. Please be aware that no warranty or guarantee is expressed or implied as only the user can determine product suitability for a specific purpose. Actual wattage ratings are influenced by many factors including fixture type, bulb location and ambient temperature. The center of the light source should be located at the center of the globe. CUSTOMERS SHOULD CONDUCT THEIR OWN MAXIMUM WATTAGE TESTS ON EACH APPLICATION AND DETERMINE THEIR OWN MAXIMUM WATTAGE.

Please note that HID includes Mercury vapor, metal halide and high-pressure sodium. Installation of a heat shield in a sphere will allow an increase of 50 watts in the light source beyond the recommended wattage.



Polymer Products LLC

Contact us today for your fixture needs.

Polymer Products LLC
Sales and Customer Service
23 Moonlanding Road
Rochester, NY 14624

Phone: 585 426 1811
Fax: 585 426 1444
Toll Free: 800 258 POLY

Web: www.polymerproductsllc.com
E-mail: info@polymerproductsllc.com